

You and Virginia Lee Hall-Cliver

3rd cousin 1x removed or half 2nd cousin 2x removed | Parent 1s side
< 1% shared DNA: 45 cM across 2 segments



Message Edit Relationship

Add to group Add note

Trees Origins Shared Matches PRO

Filter shared matches

Group Search Sort

Shared match:	Your:	Virginia Lee Hall-Cliver's:
shawnstg4012	Your: 1st cousin 1x removed 356 cM Unassigned	Virginia Lee Hall-Cliver's: Half 3rd cousin 1x removed or 3rd cousin 2x removed 25 cM
barabara covington Managed by Ronald Comiska	Your: 2nd cousin 2x removed or half 1st cousin 2x removed 115 cM Unassigned	Virginia Lee Hall-Cliver's: 4th cousin or half 3rd cousin 1x removed 32 cM
jigih2	Your: 2nd cousin 2x removed or half 2nd cousin 1x removed 91 cM Parent 1s side	Virginia Lee Hall-Cliver's: 3rd cousin or half 2nd cousin 1x removed 84 cM
Garry Morgan	Your: 3rd cousin or half 2nd cousin 1x removed 63 cM Parent 1s side	Virginia Lee Hall-Cliver's: Half 3rd cousin 1x removed or 4th cousin 38 cM
Timothy Hall	Your: 3rd cousin 1x removed or half 3rd cousin 55 cM Parent 1s side	Virginia Lee Hall-Cliver's: 1st cousin 777 cM
Roberta Mondelli	Your: 3rd cousin 1x removed or half 3rd cousin 52 cM Parent 1s side	Virginia Lee Hall-Cliver's: 2nd cousin or half 1st cousin 1x removed 282 cM
H.D. Managed by madog09	Your: 3rd cousin 1x removed or half 2nd cousin 2x removed 52 cM Parent 2s side	Virginia Lee Hall-Cliver's: Half 3rd cousin 1x removed or 4th cousin 29 cM
hudsonrobert80	Your: 3rd cousin 1x removed or half 3rd cousin 50 cM Parent 1s side	Virginia Lee Hall-Cliver's: Half 2nd cousin or 2nd cousin 1x removed 172 cM
mthigpen01	Your: 3rd cousin 1x removed or half 2nd cousin 2x removed 50 cM Parent 2s side	Virginia Lee Hall-Cliver's: 4th cousin or half 3rd cousin 1x removed 26 cM
mataylor64	Your: 3rd cousin 1x removed or half 3rd cousin 47 cM Parent 1s side	Virginia Lee Hall-Cliver's: 3rd cousin or half 2nd cousin 1x removed 74 cM
Eric Hudson	Your: Half 3rd cousin or 3rd cousin 1x removed 46 cM Parent 1s side	Virginia Lee Hall-Cliver's: 2nd cousin 1x removed 137 cM
Janice Thomas	Your: 3rd cousin 1x removed or half 2nd cousin 2x removed 42 cM Parent 1s side	Virginia Lee Hall-Cliver's: 3rd cousin or half 2nd cousin 1x removed 103 cM
Shelley Miller	Your: Half 3rd cousin or 3rd cousin 1x removed 42 cM Parent 1s side	Virginia Lee Hall-Cliver's: 3rd cousin 1x removed or half 3rd cousin 68 cM
gary frost	Your: 3rd cousin 1x removed or half 2nd cousin 2x removed 41 cM Parent 2s side	Virginia Lee Hall-Cliver's: 4th cousin or half 3rd cousin 1x removed 33 cM
Charles Uary	Your: 3rd cousin 1x removed or half 3rd cousin 40 cM Parent 1s side	Virginia Lee Hall-Cliver's: 3rd cousin or half 2nd cousin 1x removed 80 cM
pduckworth21	Your: Half 2nd cousin 2x removed or 3rd cousin 1x removed 40 cM Unassigned	Virginia Lee Hall-Cliver's: 2nd cousin 1x removed or half 1st cousin 2x removed 142 cM
Gordon St Clair	Your: Half 3rd cousin 1x removed or 3rd cousin 2x removed 39 cM Parent 1s side	Virginia Lee Hall-Cliver's: Half 3rd cousin or 3rd cousin 1x removed 44 cM
J.B. Managed by reabrown12	Your: Half 3rd cousin 1x removed or 3rd cousin 2x removed 38 cM Unassigned	Virginia Lee Hall-Cliver's: 4th cousin or half 3rd cousin 1x removed 26 cM
Paul Amerson	Your: Half 3rd cousin 1x removed or 4th cousin 37 cM Unassigned	Virginia Lee Hall-Cliver's: 4th cousin or half 3rd cousin 1x removed 22 cM
Cathy Batten	Your: 4th cousin or half 3rd cousin 1x removed 37 cM Parent 1s side	Virginia Lee Hall-Cliver's: Half 2nd cousin 1x removed or 3rd cousin 96 cM

1 of 23

Have feedback on the new DNA match list? We'd love to hear from you! [Submit feedback](#)

You and Virginia Lee Hall-Cliver

3rd cousin 1x removed or half 2nd cousin 2x removed | Parent 1x side
<1% shared DNA: 45 cM across 2 segments



[Message](#) [Edit Relationship](#)

[Add to group](#) [Add note](#)

Unlinked tree

Trees Origins **Shared Matches** PRO

Filter shared matches

Group Search Sort

Shared match:

Your:

Virginia Lee Hall-Cliver's:



Betty Wall

Your:
3rd cousin 2x removed or half 3rd cousin 1x removed
36 cM
Parent 2x side

Virginia Lee Hall-Cliver's:
Half 3rd cousin 1x removed or 4th cousin
36 cM



mcmillans65

Your:
Half 3rd cousin 1x removed or 4th cousin
36 cM
Unassigned

Virginia Lee Hall-Cliver's:
3rd cousin or half 2nd cousin 1x removed
60 cM



james gibbs

Your:
4th cousin or half 3rd cousin 1x removed
35 cM
Unassigned

Virginia Lee Hall-Cliver's:
2nd cousin 1x removed or half 2nd cousin
111 cM



Lauren King

Your:
4th cousin or half 3rd cousin 1x removed
35 cM
Parent 1x side

Virginia Lee Hall-Cliver's:
Half 3rd cousin 1x removed or 3rd cousin 2x removed
27 cM



jerthammack

Your:
4th cousin or half 3rd cousin 1x removed
35 cM
Parent 1x side

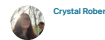
Virginia Lee Hall-Cliver's:
Half 3rd cousin 1x removed or 3rd cousin 2x removed
27 cM



Kathy Moorman

Your:
Half 3rd cousin 1x removed or 3rd cousin 2x removed
35 cM
Parent 1x side

Virginia Lee Hall-Cliver's:
4th cousin or half 3rd cousin 1x removed
27 cM



Crystal Roberson

Your:
4th cousin or half 3rd cousin 1x removed
35 cM
Unassigned

Virginia Lee Hall-Cliver's:
3rd cousin 1x removed or half 3rd cousin
46 cM



E.P.
Managed by SandTD

Your:
3rd cousin 2x removed or half 3rd cousin 1x removed
35 cM
Parent 1x side

Virginia Lee Hall-Cliver's:
Half 3rd cousin 1x removed or 4th cousin
27 cM



D.W.
Managed by suslerayray

Your:
Half 3rd cousin 1x removed or 3rd cousin 2x removed
35 cM
Parent 1x side

Virginia Lee Hall-Cliver's:
4th cousin or half 3rd cousin 1x removed
27 cM



Jessica Hicks

Your:
4th cousin or half 3rd cousin 1x removed
35 cM
Parent 1x side

Virginia Lee Hall-Cliver's:
Half 3rd cousin 1x removed or 3rd cousin 2x removed
27 cM



G.C.
Managed by RosaRae1

Your:
Half 3rd cousin 1x removed or 3rd cousin 2x removed
35 cM
Parent 1x side

Virginia Lee Hall-Cliver's:
4th cousin or half 3rd cousin 1x removed
27 cM



Josh Homier

Your:
4th cousin or half 3rd cousin 1x removed
35 cM
Parent 1x side

Virginia Lee Hall-Cliver's:
Half 3rd cousin 1x removed or 3rd cousin 2x removed
27 cM



Cleith Anders
Managed by mark anders

Your:
Half 3rd cousin 1x removed or 3rd cousin 2x removed
35 cM
Parent 1x side

Virginia Lee Hall-Cliver's:
4th cousin or half 3rd cousin 1x removed
27 cM



Kelvin Rice

Your:
4th cousin or half 3rd cousin 1x removed
34 cM
Unassigned

Virginia Lee Hall-Cliver's:
Half 3rd cousin 1x removed or 3rd cousin 2x removed
24 cM



shelley chaney

Your:
Half 3rd cousin 1x removed or 4th cousin
34 cM
Parent 1x side

Virginia Lee Hall-Cliver's:
4th cousin or half 3rd cousin 1x removed
27 cM



ed dorroh

Your:
Half 3rd cousin 1x removed or 4th cousin
34 cM
Parent 1x side

Virginia Lee Hall-Cliver's:
4th cousin or half 3rd cousin 1x removed
26 cM



Raylie Coffey

Your:
Half 3rd cousin 1x removed or 4th cousin
34 cM
Parent 1x side

Virginia Lee Hall-Cliver's:
3rd cousin 2x removed or half 3rd cousin 1x removed
27 cM



A.G.
Managed by MaryGB88

Your:
Half 3rd cousin 1x removed or 3rd cousin 2x removed
34 cM
Parent 1x side

Virginia Lee Hall-Cliver's:
Half 2nd cousin or 2nd cousin 1x removed
111 cM



Tara Roy

Your:
4th cousin or half 3rd cousin 1x removed
34 cM
Parent 1x side

Virginia Lee Hall-Cliver's:
Half 3rd cousin 1x removed or 4th cousin
26 cM



ancestryc888201
Managed by Mary Ann Wunior

Your:
Half 3rd cousin 1x removed or 3rd cousin 2x removed
34 cM
Parent 1x side

Virginia Lee Hall-Cliver's:
4th cousin or half 3rd cousin 1x removed
26 cM

2 of 23

Have feedback on the new DNA match list? We'd love to hear from you! [Submit feedback](#)